



## Sentimental Analysis Using Twitter

---

Bhavesh Tupkar, Dhiraj Igrapawar, Prashant Wankhede and  
Akash Yeole

EasyChair preprints are intended for rapid dissemination of research results and are integrated with the rest of EasyChair.

May 26, 2021

# Sentimental Analysis Using Twitter

Bhavesh Tupkar<sup>1,a)</sup>, Dhiraj Igrapawar<sup>2,b)</sup>, Prashant Wankhede<sup>3,c)</sup>,  
Akash Yeole<sup>4,d)</sup>

*Department of Information Technology  
Rajiv Gandhi College of Engineering and Research ,Nagpur, India 441110*

*BhaveshTupkar2411@gmail.com<sup>a</sup>, Theakash123@gmail.com<sup>d</sup>,  
prashantwankhede70000@gmail.com<sup>c</sup>, dhirajigrapawar@gmail.com<sup>b</sup>*

**Abstract.** Online media have gotten more consideration these days. Public and private assessment on a wide assortment of subjects are communicated and spread consistently by means of various online media. Twitter is one of the online media that is acquiring prominence. Twitter offers associations quick and compelling approach to investigate clients' viewpoints toward the basic to accomplishment in the commercial center. Building up a program for notion investigation is an way to deal with be utilized to computationally measure clients' insights. This paper investigates the plan of a conclusion examination, separating an immense measure of tweets. Prototyping is utilized in this turn of events. Results arrange clients' point of view through tweets into positive and negative, which is addressed in a pie outline and html page. Nonetheless, the program has wanted to create on a web application framework, however because of restriction of Django which can be dealt with a Linux worker or LAMP, for additional this methodology should be finished.

**Keywords-**Twitter ,Sentimental Analysis, Positive, Negative.

## INTRODUCTION

As per , a large number of individuals are utilizing social network locales to communicate their feelings, assessment and uncover about their day by day lives. Notwithstanding, individuals compose anything such as friendly exercises or any remark on items. Through the online networks give an intelligent discussion where buyers educate and impact others. Moreover, social media gives a chance to business that giving a stage to associate with their clients, for example, web-based media to promote or talk straightforwardly to clients for interfacing with client's viewpoint of items and administrations. Conversely, buyers have all the force with regards to what customers need to see and how buyers react. With this, the organization's prosperity and disappointment is freely shared furthermore, end up with verbal. Nonetheless, the informal organization can change the conduct and dynamic of shoppers, for instance, makes reference to that 87% of web clients are impacted in their buy and choice by client's survey. So that, if association can get up to speed quicker on what their client's figure, it would be more gainful to put together to respond on schedule and think of a decent procedure to contend their rivals.

## Problem Statement

In spite of the accessibility of programming to remove information concerning individual's assessment on a particular item or service, organizations and other information laborers actually face issues as to information extraction.

### **Sentiment Analysis of Web Based Applications Focus on Single Tweet Only.**

With the fast development of the World Wide Web, individuals are utilizing web-based media, for example, Twitter which creates huge volumes of assessment messages as tweets which is accessible for the conclusion examination. This means a enormous volume of data from a human perspective which make it hard to separate a sentences, read them, examine tweet by tweet, sum up them and sort out them into an reasonable arrangement in an ideal way.

### **Difficulty of Sentiment Analysis with unseemly English**

Casual language alludes to the utilization of expressions and slang in correspondence, utilizing the shows of spoken language, for example, 'would not' and 'wouldn't'. Not all frameworks can recognize estimation from utilization of casual language and this could want the examination and decision making measure. Emojis, are a pictorial portrayal of human facial articulations, which without non-verbal communication and prosody serve to cause a receiver to notice the tenor or temper of a sender's ostensible verbal correspondence, improving and changing its understanding. For instance, shows a glad perspective. Frameworks at present set up try not to have adequate information to permit them to coax sentiments out of the emojis. As people regularly go to emojis to appropriately express what they can't articulate. Not having the option to break down this puts the association at a misfortune. Short-structure is generally utilized even with short message administration (SMS). The utilization of short-structure will be utilized all the more every now and again on Twitter to assist with limiting the characters utilized. This is on the grounds that Twitter has set a cap for its characters to 140. For example, 'Tba' alludes to be reported.

### **Objective**

The destinations of the investigation are first, to consider the feeling investigation in microblogging which in view to dissect criticism from a client of an association's item; and second, is to build up a program for clients' audit on an item which permits an association or individual to slant and examines a tremendous measure of tweets into a helpful arrangement.

## **LITERATURE REVIEW**

### **Opinion Mining**

Assessment mining alludes to the expansive space of regular language handling, text mining, computational phonetics, which includes the computational investigation of conclusions, suppositions and feelings communicated in text. Despite the fact that, see or then again mentality dependent on feeling rather than reason is frequently casually alluded to as an assumption. Thus, loaning to a comparable for assessment mining or notion investigation. expressed that assessment mining has numerous application spaces including bookkeeping, law, research, diversion, training, innovation, governmental issues, and showcasing. In prior days numerous web-based media have given web clients road for opening up to communicate and impart their contemplations and insights.

### **Twitter**

Twitter is a well known constant microblogging administration that permits clients to share short data known as tweets which are restricted to 140 characters. Clients compose tweets to express their assessment on different themes identifying with their every day lives. Twitter is an ideal stage for the extraction of overall population assessment on explicit issues. An assortment of tweets is utilized as the essential corpus for feeling examination, which alludes to the utilization of assessment mining or common language handling. Twitter, with 500 million clients and million messages for each day, has immediately turned into a significant resource for associations to invigilate their standing and brands by extricating and dissecting the conclusion of the tweets by the general population about their items, administrations market and surprisingly about contenders featured that, from the online media created assessments with the mammoth development of the internet, super volumes of assessment messages as tweets, audits, web journals or then again any conversation gatherings and discussions are accessible for investigation, consequently making the internet the quickest, most involving what's more, effectively available vehicle for assessment examination.

### **Online Media**

Characterized an online media collectively of Internet-based applications that make on the philosophical and mechanical establishments of Web2.0 which is permitted to construct and trade of client produced substance. In a conversation of

Web World Start, distinguished that a pattern of web clients is expanding and proceeding to invest more energy with web-based media by the absolute time spent on cell phones and online media in the U.S. across PC expanded by

37 percent to 121 billion minutes in 2012, contrasted with 88 billion minutes in 2011. Then again, organizations utilize person to person communication destinations to discover and speak with customers, business can be exhibited harm to efficiency brought about by friendly organizing . As online media can be presented so effectively on people in general, it can hurt private data to fan out in the social world .In actuality, talked about that the advantages of taking part in online media have gone past basically friendly sharing to construct association's standing and get profession openings and financial pay. Moreover, referenced that the web-based media is additionally being utilized for commercial by organizations for advancements, experts for looking, enlisting, social learning on the web and electronic business. Electronic trade or E-business alludes to the buy and offer of merchandise or administrations online which can through web-based media, such has Twitter which is helpful because of its 24-hours accessibility, simplicity of client support and worldwide reach . Among the reasons of why business will in general utilize more online media is for getting knowledge into buyer social propensities, market insight and present a chance to find out about client audit and insights.

### **Twitter Sentiment Analysis**

The assumption can be found in the remarks or tweet to give valuable markers to a wide range of purposes . Additionally, and expressed that an assumption can be classified into two gatherings, which is negative and positivewords. Conclusion investigation is a characteristic language preparing strategies to measure a communicated assessment or conclusion inside a choice of tweets .Slant investigation alludes to the overall strategy to separate extremity and subjectivity from semantic direction which alludes to the strength of words and extremity text or expressions . There has two primary methodologies for separating feeling naturally which are the dictionary based methodology and AI based methodology .

### **AI based Approach**

AI techniques regularly depend on administered characterization approaches where notion identification is outlined as a double which are positive and negative . This approach requires named information to prepare classifiers . This approach, it becomes clear that parts of the neighborhood setting of a word should be considered like negative (for example Not delightful) and heightening (for example Delightful) In any case, showed a fundamental worldview for make an element vector is:

- i. Apply a grammatical form tagger to each tweet post
- ii. Gather all the modifier for whole tweet posts
- iii. Make a famous word set made out of the top N descriptive words
- iv. Explore the entirety of the tweets in the trial set to make the accompanying:
  - Number of positive words
  - Number of negative words
  - Presence, nonappearance or recurrence of each wordshowed some illustration of switch invalidation, nullification just to switch the extremity of the dictionary: evolving delightful (+3) into not excellent (- 3). More models: She isn't breathtaking (6-5=1) however not awful (- 6+5=-1) all things considered. For this situation, the refutation of a firmly negative or positive esteem mirrors a blended point of view which is effectively caught in the moved worth. In any case, has referenced the constraint of AI based way to deal with be more appropriate for Twitter than the lexical based technique. Besides, expressed that AI strategies can produce a fixed number of the most consistently occurring famous words which relegated a whole number v.

### **Techniques of sentimental analysis**

The semantic ideas of substances extricated from tweets can be utilized to quantify the general relationship of a gathering of substances with a given assumption extremity . Extremity alludes to the most fundamental structure, which is if a book or sentence is positive or on the other hand negative . Be that as it may, feeling investigation has methods in doling out extremity, for example,

### **Case-Based Reasoning (CBR)**

Case-Based Reasoning (CBR) is one of the procedures accessible to execute slant investigation. CBR is known by reviewing the past effectively tackled issues and utilize the same answers for take care of the current firmly related issues . recognized a portion of the upsides of utilizing CBR that CBR doesn't need an express area model thus elicitation turns into an errand of social event care narratives and CBR framework can learn by gaining new information as cases. This what's more, the utilization of information

base procedures make the keep of enormous segments of data simpler.

### **Artificial Neural Network (ANN)**

Mentioned that Artificial Neural Network (ANN) or known as neural network is a mathematical technique that interconnects group of artificial neurons. It will process information using the connections approach to computation. ANN is used in finding the relationship between input and output or to find patterns in data.

### **Natural Language Processing (NLP)**

NLP strategies depend on AI and particularly factual realizing which utilizes an overall learning calculation joined with an enormous example, a corpus, of information to get familiar with the principles. Opinion investigation has been dealt with as a Regular Language Processing signified NLP, at numerous degrees of granularity. Beginning from being a record level order task, it has been taken care of at the sentence level and all the more as of late at the expression level. NLP is a field in software engineering which includes making PCs get significance from human language and contribution as a method of communicating with this present reality.

### **Support Vector Machine (SVM)**

Support Vector Machine is to distinguish the assumptions of tweets. Along with expressed SVM can concentrate and break down to get upto 70%-81.3% of precision on the test set. Gathered preparing information from three unique Twitter supposition location sites which essentially utilize a few pre-assembled assessment vocabularies to name each tweet as certain or negative. Utilizing SVM prepared from these loud named information, they got 81.3% in conclusion grouping precision.

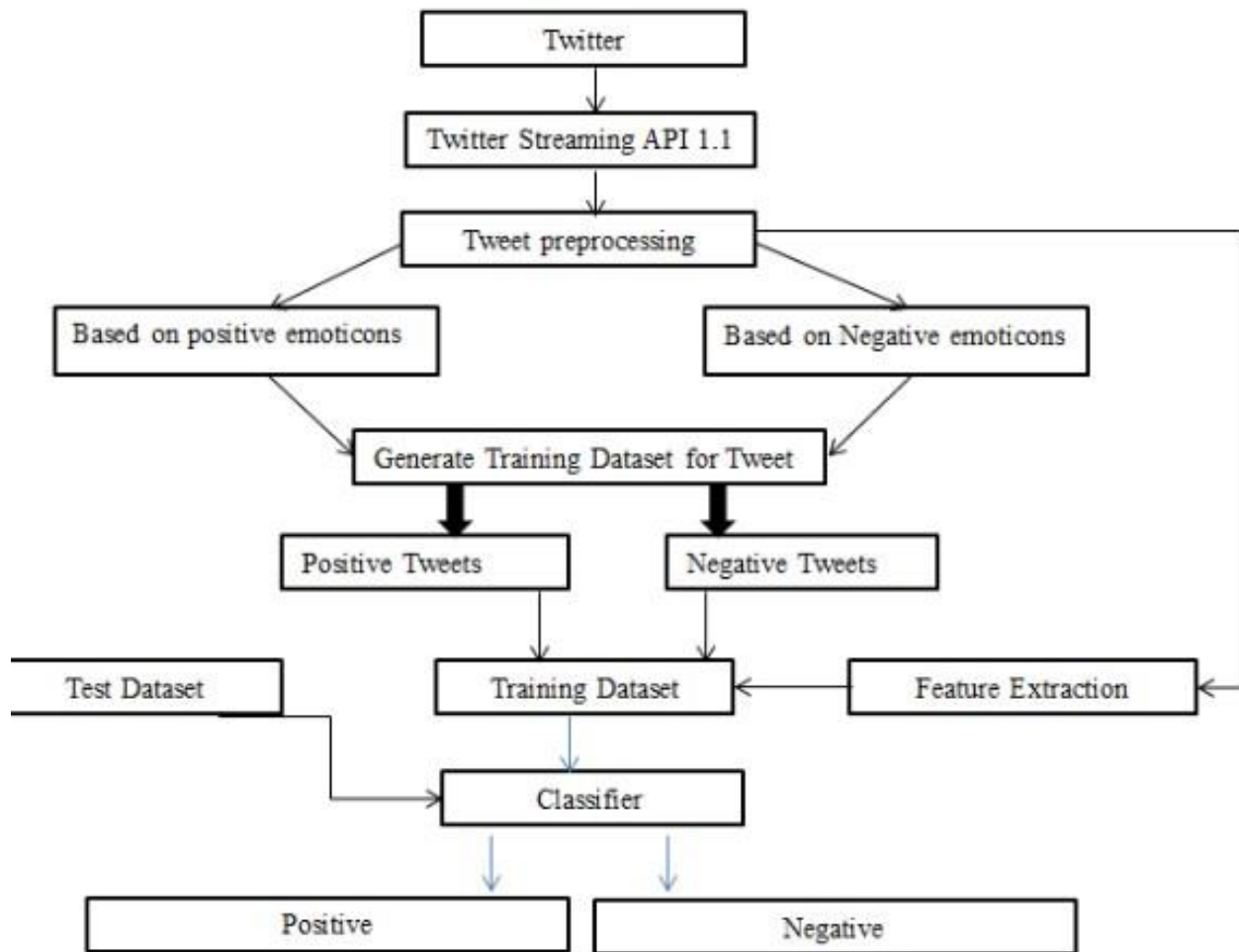
### **Application Programming Interface**

Speculative chemistry API performs better compared to the others as far as the quality and the amount of the removed elements. As time passed the Python Twitter Application Programming Interface (API) is made by gathered tweets. Python can consequently determined recurrence of messages being retweeted at regular intervals, arranged the main 200 messages based on there-tweeting recurrence, and put away them in the assigned information base. As the Python Twitter API just included Twitter messages for the latest six days, gathered the information should have been put away in an alternate data set.

### **Python**

Python was found by Guido Van Rossum in Natherland, 1989 which has been public in 1991. Python is a programming language that's available and solves a computer problem which is providing a simple way to write out a solution mentioned that Python can be called as a scripting language. Moreover, and also supported that actually Python is a just description of language because it can be one written and run on many platforms. In addition, mentioned that Python is a language that is great for writing a prototype because Python is less time consuming and working prototype provided, contrast with other programming languages. Many researchers have been saying that Python is efficient, especially for a complex project, as has mentioned that Python is suitable to start up social networks or media steaming projects which most always are a web-based which is driving a big data. Gave the explanation that since Python can deal with and deal with the memory utilized. Other than Python makes a generator that permits an iterative interaction of things, each thing in turn and permit program to snatch source information one thing at a time to pass each through the full handling chain.

## Methodology



(a)

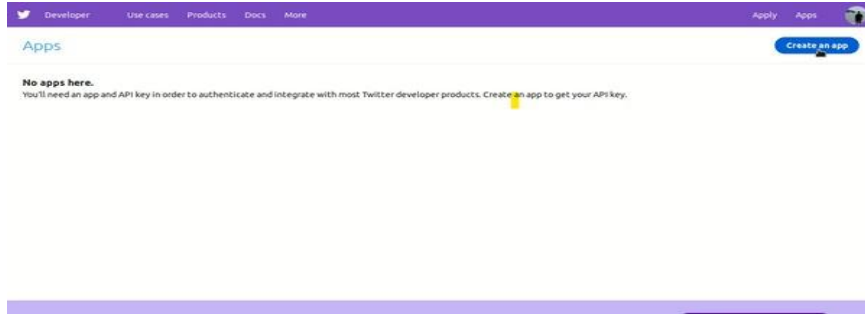
## IMPLEMENTATION

### Preparing The Test Set

Register Twitter application to get our own credentials.

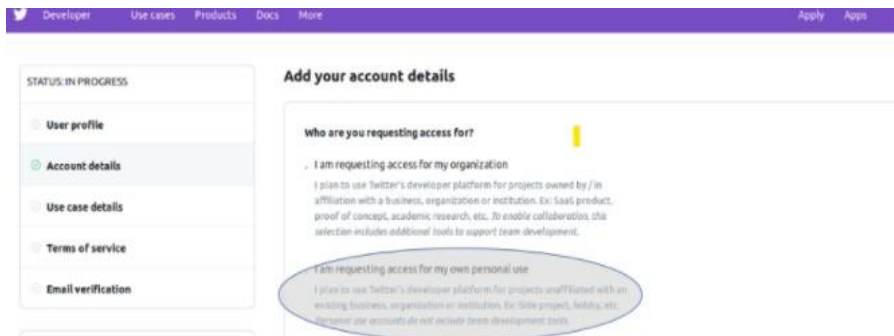
Visit the twitter developer website and log in

On the top-right corner, click on the Apps button, Create an App, Apply and then Continue, as shown below:



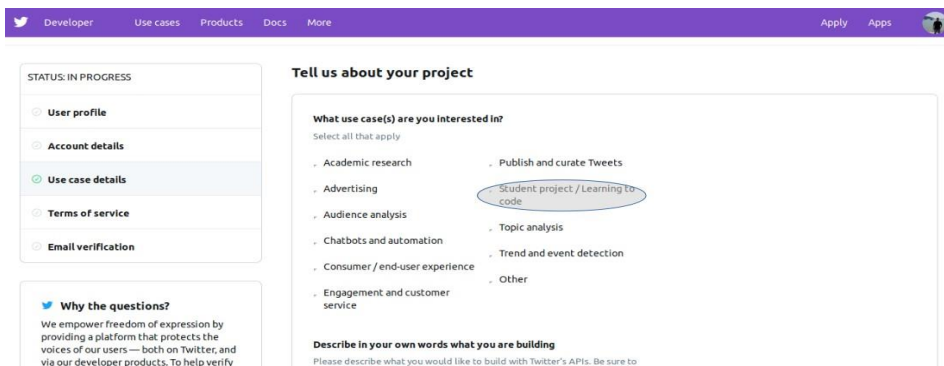
(b)

Next, we will choose the “I am requesting access for my own



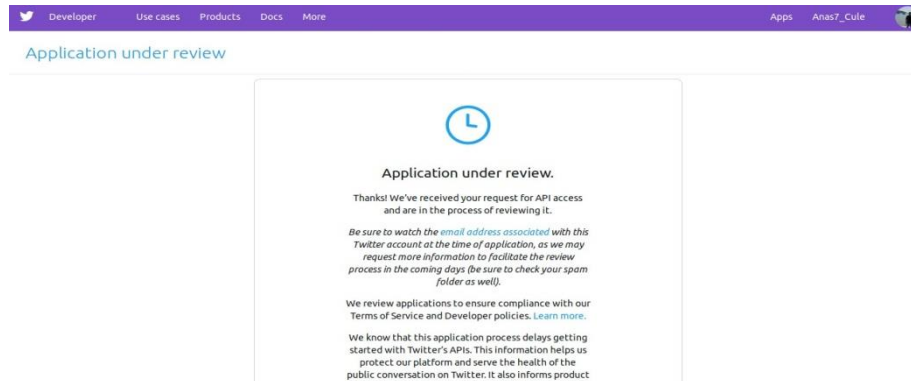
(c)

On the same web page, scroll-down a bit and input your Account name and Country of operation then click Contin and you will be redirected to the next web page. Here, you can choose any Use Cases you're interested in. For our case, I chose the following:



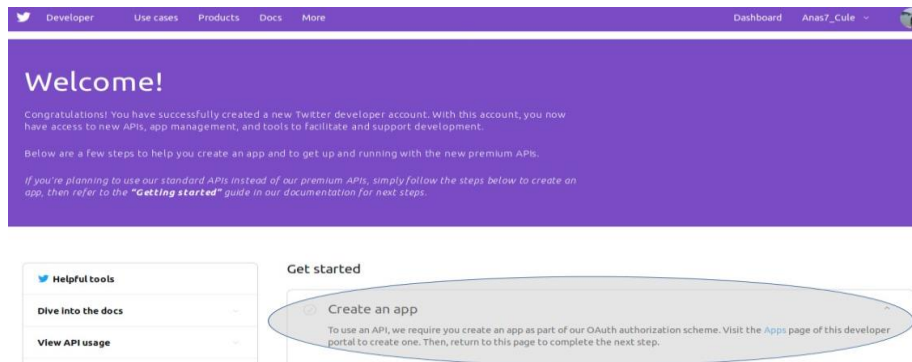
(d)

iv. Next, open your email and verify your Twitter Developer account through the link included in the email sent to you. Finally, you will get a message similar to the following:



(e)

v. When you get the approval email, click on the login link it contains. You will be redirected to the following web page, where you should choose “Create an app”:



(f)

## Authenticating our Python script

Since we now have our Twitter Developers login credentials (i.e. API keys and Access token), we can proceed to authenticating our program. First, we need to import the Twitter library, then create an `Twitter.API` object with the credentials from the “safe” place we talked about.

## Creating the function to built test set

Now we can start on making a function that downloads the Test set that we talked about. Basically, this is going to be a function that takes a search keyword (i.e. string) as an input, searches for tweets that include this keyword and returns them as `twitter.Status` objects that we can iterate through.

This means, we can only get up to 180 tweets using our search function every 15 minutes, which should not be a problem, as our Training set is not going to be that large anyway. For the sake of simplicity, we will limit the search to 100 tweets for now, not exceeding the allowed number of requests.



## Preparing The Training Set

In this section, we will also be using our Twitter API instance from the last section. However, we need to get some things out the way first. We will be using a downloadable Training set. The tweets of which were all labeled as positive or negative, depending on the content. This exactly what a Training set is for.

*A Training set is critical to the success of the model. Data is which needs to be labeled properly with no inconsistencies or incompleteness, as training will rely heavily on the accuracy of such data and the manner of acquisition.*

Let's backtrack for a bit. Remember the Twitter API limit we talked about? This will also apply here, as we will be using the API to get the actual tweet text through each tweet's ID number included in the Corpus we have. This means, to download 5000 tweets, we will need to follow:

```
max_number_of_requests = 180
time_window = 15 minutes = 900 seconds

Therefore, the process should follow:

Repeat until end-of-file: {
    180 requests -> (900/180) sec wait
}
```

(g)

## Preprocessing Tweets in The data sets

Before we move on to the actual classification section, there is some cleaning up to do. As a matter of fact, this step is critical and usually takes a long time when building Machine Learning models. However, this will not be a problem in our task, as the data we have is relatively consistent. In other words, we know exactly what we need from it. I will express on this matter later on.

Let's take an example. The following tweet could be present in the data set:

```
"@person1 retweeted @person2: Corn has got to be the most
delllllicious crop in the world!!!! #corn #thoughts..."
```

(h)

Our pre-processor will result in the tweet looking like:

```
"AT_USER rt AT_USER corn has got to be the most delicious crop in the world corn thoughts"
```

(i)

And finally, the tokenization will result in:

```
{"corn", "most", "delicious", "crop", "world", "corn", "thoughts"}
```

(j)

## Naïve Bayes Classifier

Without a doubt, one of the most important concepts in Computer Science and Machine Learning. It can be frustrating to get into the math of it head-first. Therefore, I will not be explaining it from the mathematical perspective.

following Bayes' theorem:

$$P(A|B) = P(B|A) * P(A) / P(B)$$

(k)

All you need to know for our task is that a Naive Bayes Classifier depends on the ever-famous Bayes' theorem. Before we move on, let's give a quick overview of the steps we will be taking next:

- 1- Build a vocabulary (list of words) of all the words resident in our training data set.
- 2- Match tweet content against our vocabulary — word-by-word.
- 3- Build our word feature vector.
- 4- Plug our feature vector into the Naive Bayes Classifier.

## TESTING THE MODEL

Moment of truth! Let's finish up our work by running the classifier (i.e. NBayesClassifier) on the 100 tweets that we downloaded from Twitter, according to our search term, and getting the majority vote of the labels returned by the classifier, then outputting the total positive or negative percentage (i.e. score) of the tweets.

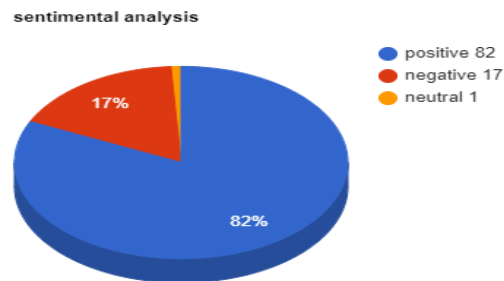
## RESULT

## Twitter Retrieved

To connect with Twitter API, designer need to concur in terms and states of advancement Twitter stage which has been given to get an approval to get an information. The yield from this cycle will be saved in JSON document. The reason is, JSON (JavaScript Object Notation) is a lightweight information trade design which is simple for people to compose and peruse. Besides, expressed that, JSON is straightforward for machines to create and parse. JSON is a book design that is completely language free, however utilizes a show that is known to developers of the C-group of dialects, including Python furthermore, numerous others. Be that as it may, outputs size relies upon the time for recovering tweets from Twitter. By the by, the yield will be ordered into 2 structures, which are encoded and un-encoded. As indicated by security issue for getting to an information, a portion of the yield will be appeared in an ID structure like string ID. Feeling Analysis. The tweets will be relegated the worth of each word, along with order into positive and negative word, as indicated by vocabulary word reference. The outcome will be appeared in .txt, .csv and html.

## Data Presented

The outcome will be appeared in a pie diagram which is addressing a level of positive, negative and invalid assumption hash labels. For invalid hash tag is addressing the hash labels that were doled out zero worth. Notwithstanding, this program is ready to list a main ten positive and negative hash labels. As shown in Fig. 1, the pie chart is representing of each percentage positive, negative and neutral sentiment tweet in different color.



(1)

In above pie chart as per result Positive tweet % is 82, Negative tweet % is 17, Neutral % is 1

## OUTPUT

Positive tweets percentage: 82 %  
Negative tweets percentage: 17 %  
Neutral tweet percentage: 1%

Positive tweets:

RT @JohnGGalt: Amazing—after years of attacking Donald Trump the media managed to turn #InaugurationDay into all about themselves.

#MakeAme...

RT @vooda1: CNN Declines to Air White House Press Conference Live YES!

THANK YOU @CNN FOR NOT LEGITIMI...

RT @Muheeb\_Shawwa: Donald J. Trump's speech sounded eerily familiar...

POTUS plans new deal for UK as Theresa May to be first foreign leader to meet new president since inauguration

.@realdonaldtrump #Syria #Mexico #Russia & now #Afghanistan.

Another #DearDonaldTrump Letter worth a read @AJEnglish

Negative tweets:

RT @Slate: Donald Trump's administration: "Government by the worst men."

RT @RVAwonk: Trump, Sean Spicer, et al. lie for a reason.

Their lies are not just lies. Their lies are authoritarian propaganda.

RT @KomptonMusic: Me: I hate corn

Donald Trump: I hate corn too

Neutral tweet:

RT@ppr: I am free

## CONCLUSION

Twitter notion examination is created to investigate customers' viewpoints toward the basic to achievement in the commercial center. The program is utilizing a machine-based learning approach which is more exact for investigating an assumption;

along with regular language handling methods will be utilized. Subsequently, program will be arranged supposition into positive and negative, which is addressed in a pie graph and html page. Although, the program has been wanted to be created as a web application, because of restriction of Django which can just work on Linux worker or LAMP. In this manner, it can't be figured it out. Accordingly, further upgrade of this component is suggested in future examination.

## ACKNOWLEDGEMENT

We are thankful to our guide Prof. Akhil Anjekar under whom my project took the shape of reality from mere media, and who constantly provided us with ample support and stimulus to reach our goals. We are also thankful to our co-guide Prof. Alok Chauhan for enlightening us with his precious guidance and constant encouragement. We are grateful to Dr. Manish Goswami, HOD, IT Department RGCER, for his kind co-operation and timely help. We express our gratitude toward Principal RGCER, for her support and motivation. Lastly, we would like to thank all those who were directly or indirectly contributed to make this software successful with their extended support.

## REFERENCES

1. A.M. Kaplan, and M, Haenlein, "Users of the world, unite! The challenges and opportunities of Social Media," France: Paris, 2010.
2. Q. Tang, B. Gu, and A.B. Whinston, "Content Contribution in Social Media: The case of YouTube", 2nd conference of social media. Hawaii: Maui, 2012.
3. M.Taboada, J. Brooke, M. Tofiloski, K. Voll, and M. Stede, "Lexicon-Based Methods for Sentiment Analysis," Association for Computational Linguistics, 2011

4. M. Annett, and G. Kondrak, "A Comparison of Sentiment Analysis Techniques: Polarizing Movie Blogs," Conference on web search and web data mining (WSDM). University of Alberia: Department of Computing Science, 2009.
5. P. Goncalves, F. Benevenuto, M. Araujo and M. Cha, "Comparing and Combining Sentiment Analysis Methods", 2013.
6. E. Kouloumpis, T. Wilson, and J. Moore, "Twitter Sentiment Analysis:The Good the Bad and theOMG!", (Vol.5). International AAAI, 2011.
7. S. Sharma, "Application of Support Vector Machines for Damage detection in Structure," Journal of Machine Learning Research, 2008.
8. A.Sharma, and S. Dey, "Performance Investigation of Feature Selection Methods and Sentiment Lexicons for Sentiment Analysis," Association for the advancement of Artificial Intelligence, 2012.
9. J. Spencer and G. Uchyigit, "Sentiment or: Sentiment Analysis of Twitter Data," Second Joint Conference on Lexicon and Computational Semantics. Brighton:University of Brighton, 2008.
10. A. Blom and S. Thorsen, "Automatic Twitter replies with Python," International conference "Dialog 2012".